

NG9-1-1 PROGRAM MAINE

BOB WHITE,
9-1-1 SPATIAL DATABASE MANAGER

KATHY LILJEQUIST, GISP
GEOCOMM

9-1-1 & GIS Evolution

- 1988 – Voters approved E9-1-1 deployment
- 1986 – GIS housed in Conservation
- 1991 – Budget cuts
- 1994 – Addressing pilot with GIS
- 1996 – Statewide Addressing Project
- 1999 – GIS Maintenance
- 2004 – Mapping at PSAPs to support WE9-1-1
- 2011 – RFP for NG system
- 2012 Address Point dev/maint
- 2013 – GIS supports NG9-1-1 system, moved to ESCB

Partnerships

- ESCB
- Addressing Officers
- NG 9-1-1 System
- Outside users

Data for NG9-1-1

- Road Centerlines (improved)
 - Added new NG fields
 - Added fields to support routing
 - Enhanced spatial accuracy (1:24000 to 1:4800) in progress
- Address Points (new)
 - Geocoded ALI Database
 - USPS County Project
 - Addressing Officer review & maintain
- Service Provider Boundaries (new)
 - Individual layers for each type of service
 - Fire, Law, EMS, Medical Transport

Statistics

- 143,000 road centerline segments
- 1.2 million phone records
- 16 Counties, 492 Organized Communities, 424 Unorganized TWP, and 3 Indian Reservations
- After initial load all phone records “geocoded” except 17.
- Daily deltas provisioned to ALL Database, MSAG, ECRF, LVF and the MapServer along with the public facing GIS Data Catalog

Maintenance

- ❑ Originally no maintenance plans
- ❑ paper and sent via USPS
- ❑ Currently efax, and emails, some paper via USPS
- ❑ 1st Quarter 2014, Online ArcServer based Change Request Application
- ❑ New roads are GPS'd
- ❑ Points are spatially updated based on new photography

Lessons learned to date

- Have Maintenance plan in place from day 1!
- Build team, get buy in from all parties
- Share the data, the more people have access the better the data becomes
- Test, Test, Test
 - Data Model, M&P's, workflows, etc
- Learn from others



Data Maintenance & Workflow

Functionality

- NG9-1-1
 - Location Validation Function (LVF)
 - Emergency Call Routing Function (ECRF)
- Dispatch Mapping
- Maintenance
 - Change Requests
 - Discrepancy Review
- MSAG Maintenance

Data Integrity

- Analysis based of the various functions



ECRF/LVF



GeoLynx
Server
Dispatch

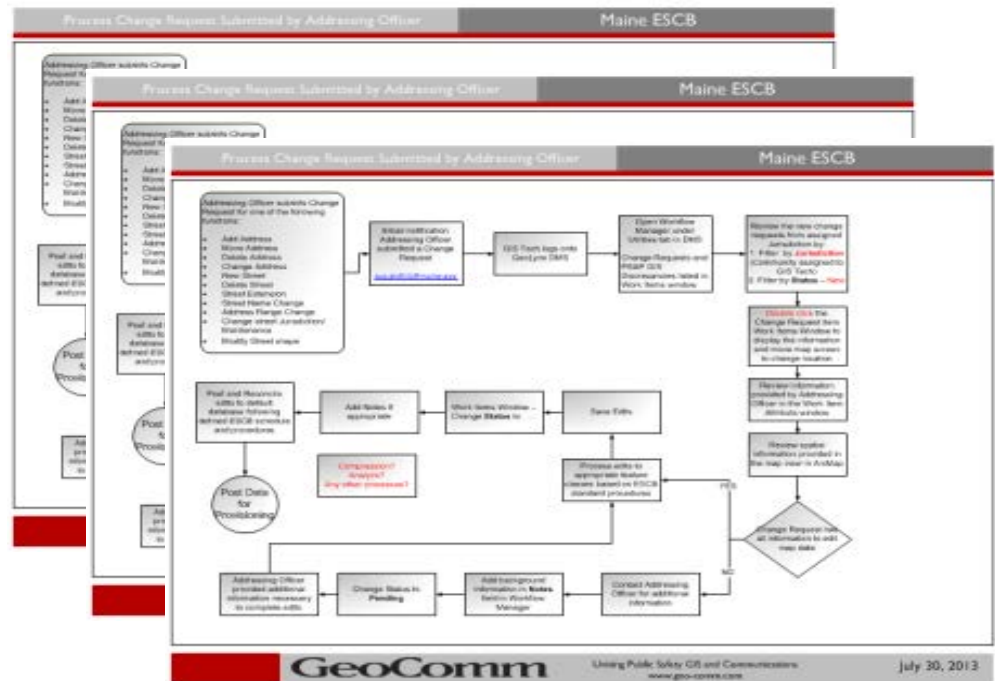
- Cleanup by ESCB

Data Design

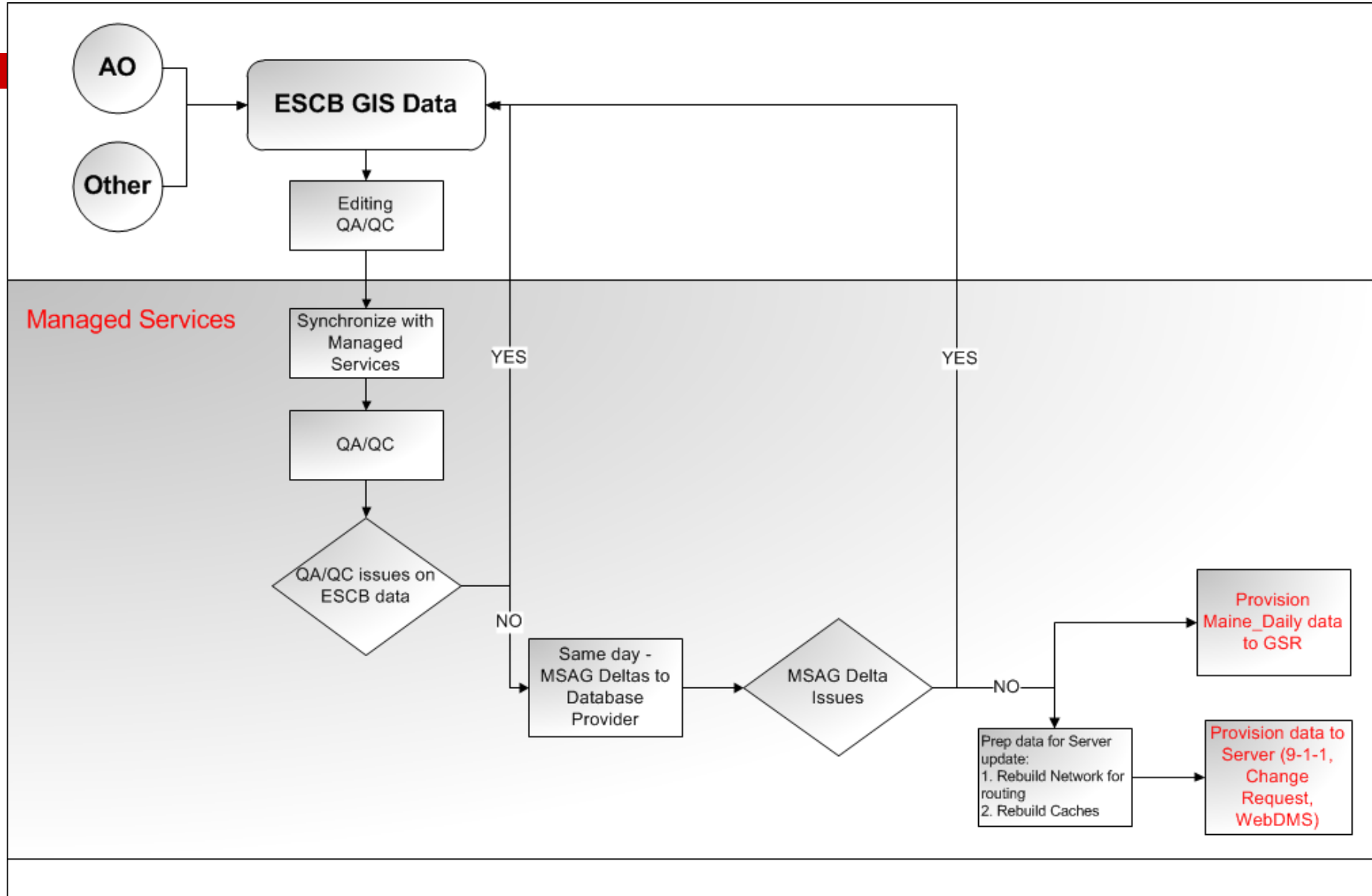


Maintenance Plan

- Various data support components
- QA/QC
- Data transfer



Data Provisioning



Questions

