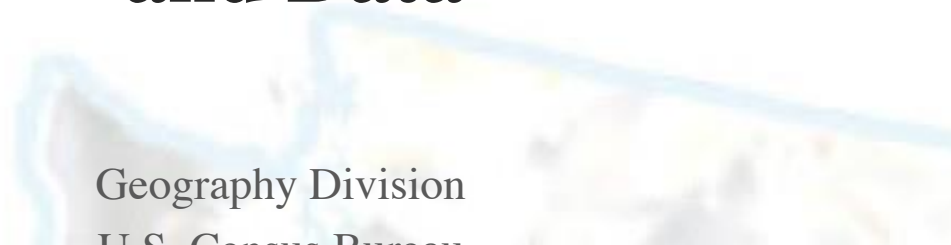


Stand Up, Be Counted

2020 Census

Geographic Partnership Programs and Data

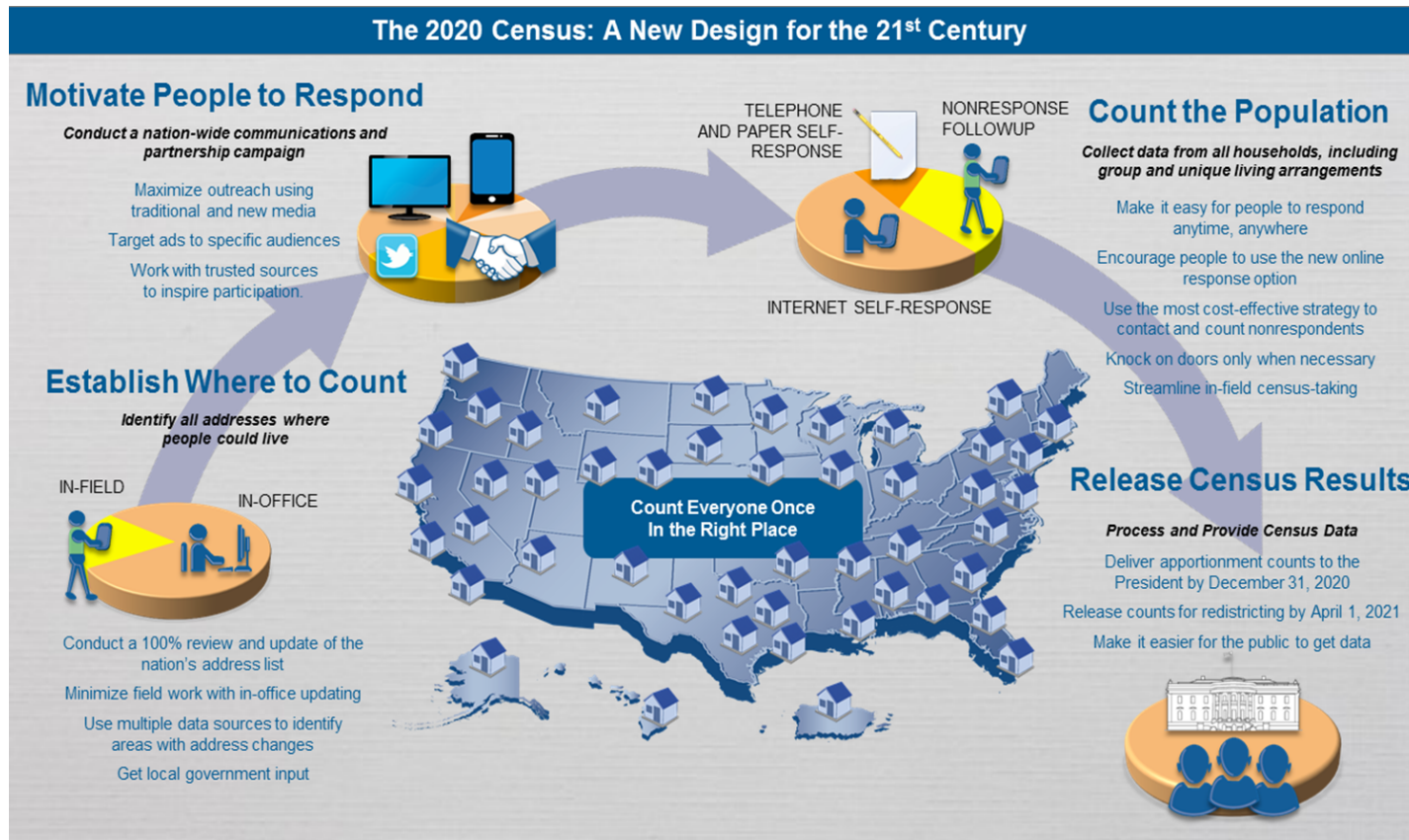


Geography Division
U.S. Census Bureau

Agenda

- The Decennial Census
- Boundary and Annexation Survey (BAS)
- State Certification
- Geographic Support System (GSS)
- 2020 Participant Statistical Areas Program (PSAP)

2020 Census Design



Boundary and Annexation Survey (BAS)

BAS

- Annual, voluntary survey to collect legal status and boundary updates for tribal, state, and local governments.
- Boundary updates submitted as part of the BAS must be legally in effect on or before January 1st of each BAS year.

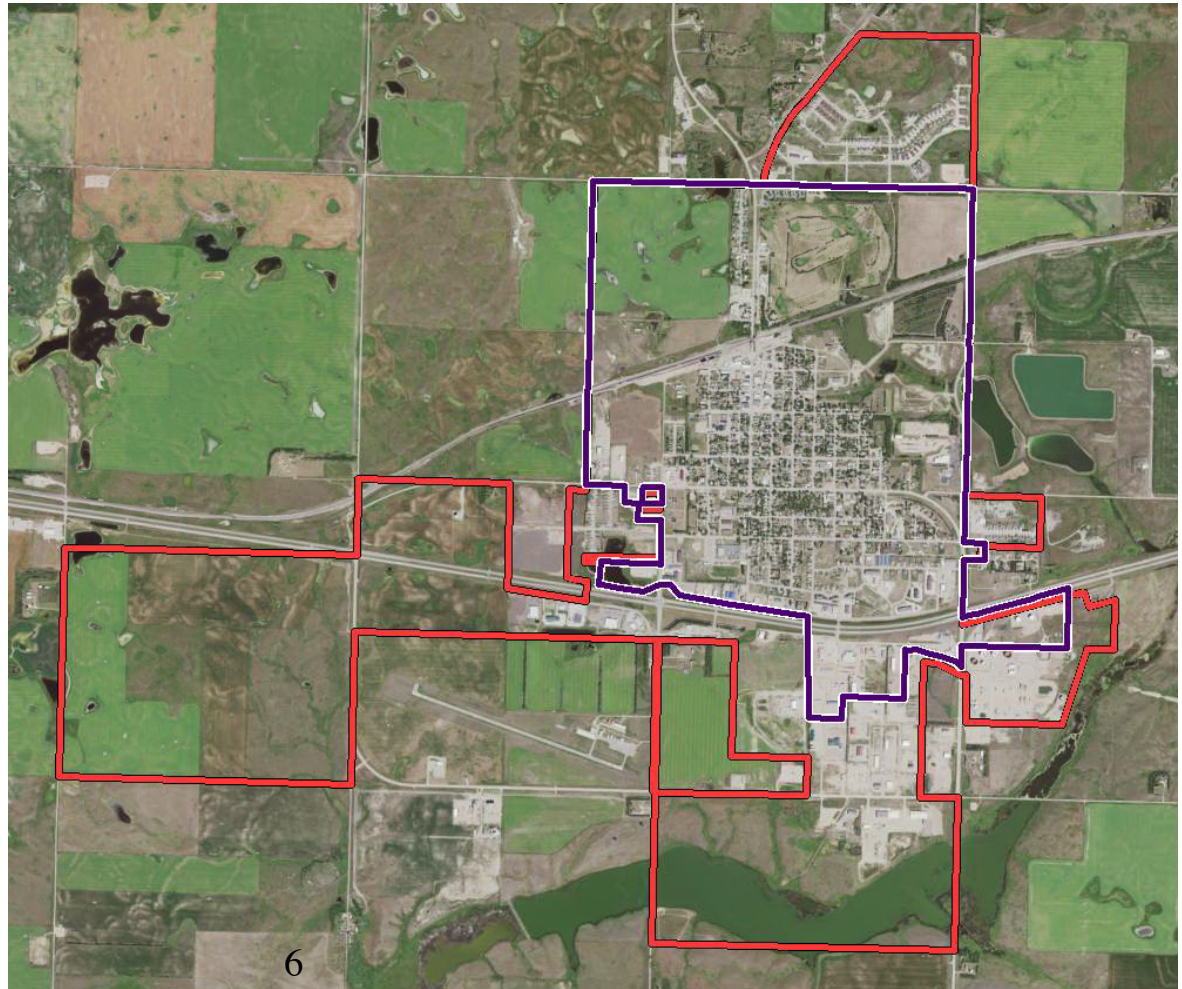
Boundary Discrepancies

Entity's Participation Status:

2017 BAS: No Changes
2016 BAS: No Response
2015 BAS: No Response

 Census Bureau's TIGER data

 Partner source data



Benefits of Participation

- Accurate boundaries collected through the BAS improve:
 - ACS data estimates.
 - PEP data estimates.
 - Decennial census data estimates.
- These data estimates provide important information for community planning and decision-making:
 - ☑Education
 - ☑Housing
 - ☑Health care services
 - ☑Services for the elderly

ACS

- Ongoing survey providing vital information on an annual basis about our nation and its people:
 - ☑ Demographics
 - ☑ Housing
 - ☑ Social
 - ☑ Economic
- Allows communities to see how they are changing.
- Helps determine how more than \$675 billion in federal funds are distributed each year.
- Products include data profiles, geographic comparison profiles, and detailed tables.
- ACS website:
 - <http://www.census.gov/programs-surveys/acs/>.

PEP

- Produces estimates of the population for the U.S., its states, counties, cities, and towns, as well as the Commonwealth of Puerto Rico and its municipios.
- Uses current data on births, deaths, and migrations to calculate population change since the most recent decennial census.
- Produces time series of estimates of population, demographic change, and housing units.
- Estimates used in federal funding allocations.
- PEP website:
 - <http://www.census.gov/programs-surveys/popest.html>.

2018 BAS schedule

Activity	Date(s)
Annual Response information emailed ✓	January 2018
Annual Response letters ✓	February 1, 2018
Non-response follow up email ✓	February 20, 2018
BAS submission deadline for inclusion in ACS and PEP	March 1, 2018
State Data Center and National Processing Center non-response follow up	March-April 2018
BAS submission deadline for inclusion in 2019 BAS materials	May 31, 2018

BAS Participation Methods

- Geographic Update Partnership Software (GUPS)
- Digital (Commercial GIS)
- Paper Maps

BAS state agreements

- Available to states that enforce laws requiring local governments to report boundary changes to a state level agency.
- Two agreement types:
 - Reports boundary changes to the annual BAS for all entities within its jurisdiction.
 - State provides Census Bureau with list of local governments that reported changes to the state.
- State participation improves the BAS process:
 - Reduces duplication of effort in collecting information.
 - Reduces the burden and cost on local governments.

BAS State Agreements

The Census Bureau currently has state agreements with the following states:

Alaska	Minnesota DOT and Federally Recognized Tribes
Arkansas	Mississippi
Georgia	New Mexico
Kentucky	Tennessee
Maine	Utah
Massachusetts	Washington
Michigan	Wisconsin

BAS County Agreements

- The county government responds to the BAS for the governmental units within their jurisdiction.
- County agreement does not require every entity to sign up.
- County participation improves the BAS process by:
 - Reduces duplication of effort in collecting information.
 - Reduces the burden and cost on local governments.
 - Improves the completeness of boundary data collected.

State Certification



U.S. Department of Commerce
Economics and Statistics Administration
U.S. CENSUS BUREAU
[census.gov](https://www.census.gov)

State Certification

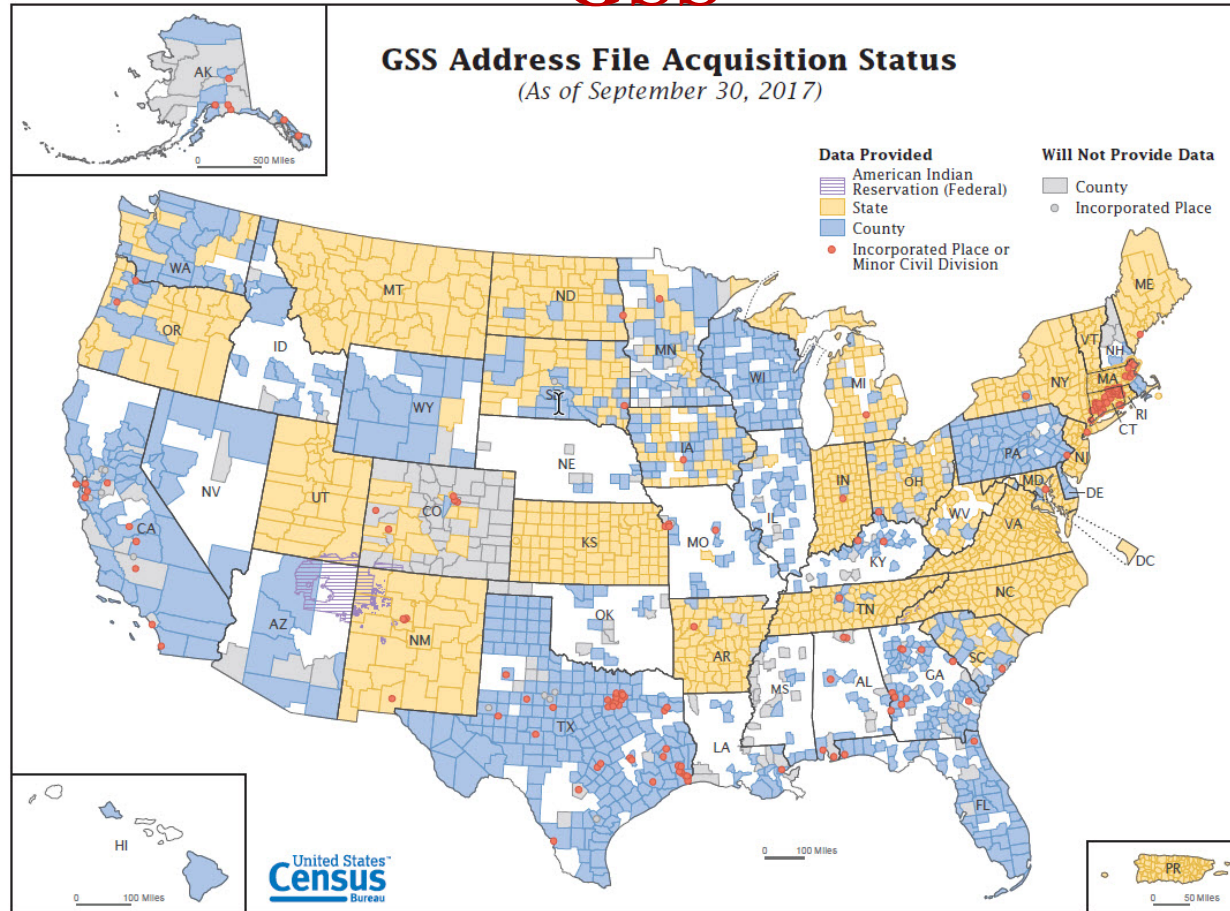
- Governor-appointed State Certifying Official (SCO) reviews information that local governments reported during previous BAS years.
 - Legal boundary changes (annexations and deannexations).
 - Functional status of governments.
 - Legal names of governmental units.
- Depending on state laws, SCOs can certify or reverse reported legal boundary changes.
- Local government officials are informed of all reversals and encouraged to resolve with the SCO and Census through the BAS.

Geographic Support System (GSS)

GSS

- Maintain and update the Census Bureau's geographic framework for data collection, tabulation, and dissemination.
- Continual address and road updates throughout the decade to support current surveys and the 2020 Census.
- An ongoing partnership presence throughout the decade that strengthens partnerships and sustains ongoing relationships with governments.
- The Census Bureau is still collecting address and road updates for 2018.

GSS



2020 Participant Statistical Areas Program (PSAP)



U.S. Department of Commerce
Economics and Statistics Administration
U.S. CENSUS BUREAU
[census.gov](https://www.census.gov)

What is PSAP?

- Allows Invited participants to review and update selected statistical area boundaries for 2020 Census data tabulation using Census Bureau criteria and guidelines.
- The Census Bureau uses the defined statistical areas for the 2020 Census, Economic Census, and American Community Survey data.

PSAP Statistical Geographies

- Standard statistical geographies • include:
 - o Census tracts.
 - o Block groups.
 - o Census designated places (CDPs).
 - o Census county divisions (CCDs), in selected states.

- Tribal statistical geographies include:
- o Tribal census tracts (TCTs).
 - o Tribal block groups (TBGs).
 - o Census designated places (CDPs).
 - o Tribal Designated Statistical Areas (TDSAs).
 - o State Designated Tribal Statistical Areas (SDTSAs).
 - o Alaska Native village statistical areas (ANVSAs).
 - o State reservations (legal entities).
 - o Oklahoma tribal statistical areas (OTSAs) and associated tribal subdivisions.

2020 PSAP Criteria

- No substantial changes to criteria from 2010.
- Statistical geographies are recognizable in:
 - o Concept and purpose.
 - o Coding and naming conventions.
 - o Types of boundary features permitted.

2020 PSAP Delineation

- 2010 Statistical geographies reviewed and updated by Census Bureau (Pre-SAP) for adherence to:
 - Published criteria and guidelines.
 - Coding and naming conventions.
 - Optimal boundary feature use.
- Invited participants will have the following options:
 - Accept the Census Bureau's 2020 Census proposed statistical areas.
 - Update the 2020 Census proposed statistical areas.
 - Use the 2010 Census statistical area geography as a base to make updates.

2020 Pre-SAP Process

- Census Bureau staff are conducting an internal review of:
 - o Census tracts.
 - o Block groups.
 - o CCDs, CDPs, and tribal statistical geographies.
- Planned Pre-SAP updates are reviewed and implemented prior to 2020 PSAP product creation.

2020 Pre-SAP Process



Tract 0820.12: A tract in Maricopa County, AZ is an example of where using legal boundaries is preferred to using visible features to define statistical boundaries.

Red: Incorporated place boundary
Purple: Census tract boundary

2020 PSAP Process

- Census Bureau creates and distributes materials to participants.
- Participants review and update statistical boundaries.
- Census Bureau reviews and implements participant updates by:
 - o Reviewing updates and enforcing thresholds for census tracts and block groups.
 - o Reviewing and maintaining boundaries for CCDs.
 - o Reviewing and updating CDP and tribal statistical boundaries.

2020 PSAP Schedule

Timeframe	Activity
February – May 2018	Establish the 2020 PSAP participant list.
July 2018	PSAP Invitation materials sent to PSAP Participants.
January 2019	Delineation Phase begins. Participants have 120 calendar days to submit updates.
February 2019	Webinar trainings begin.
July 2019	Participants notified of delineation phase closeout.
January 2020	Verification phase begins. Participants have 90 calendar days to review updates.

Contact Information

BAS

Email: [≤geo.bas@census.gov>](mailto:geo.bas@census.gov)

Phone: 1-800-972-5651

GSS

Phone: 301-763-1099

PSAP

Email: [≤geo.psap@census.gov>](mailto:geo.psap@census.gov)

Phone: 1-844-788-4921